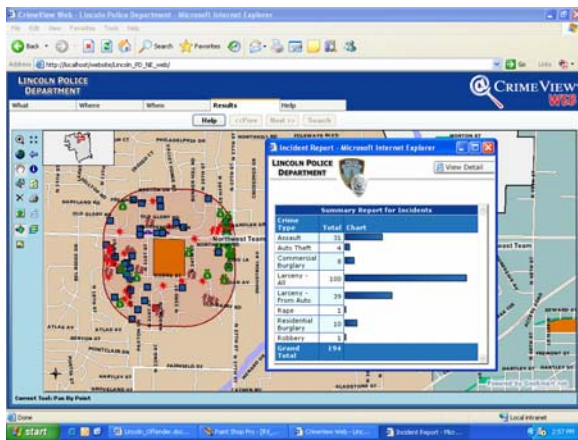




CrimeView Helps Stop Sex Offender

Author: Chief Tom K. Casady, Lincoln Police Department, Nebraska

The CrimeView® family of products has become an essential tool set in our community policing strategy. CrimeView Community™ lets us keep neighborhood stakeholders informed of the crime patterns on their block, in their neighborhood, and across the city. It also draws people into our Web site where they find other valuable resources. Keeping citizens informed helps us sustain partnerships and energize strategies to deal with crime problems. Internally, CrimeView Web™ does the same thing for our employees. It gives them easy access to mapped crime data 24 hours a day. As web-based applications, any user with an Internet connection and basic familiarity with using a Web browser has the power of a full-featured geographic information system at their disposal, with no client software whatsoever on the PC. The simplicity of updating geography and making modifications with a single project on a web server is unbeatable. The user interface is intuitive. Its simplicity belies the rich query and reporting capabilities. The product is so easy to use that training consists of putting a group of officers in front of PCs and letting them explore with an instructor standing by for any questions. The .html



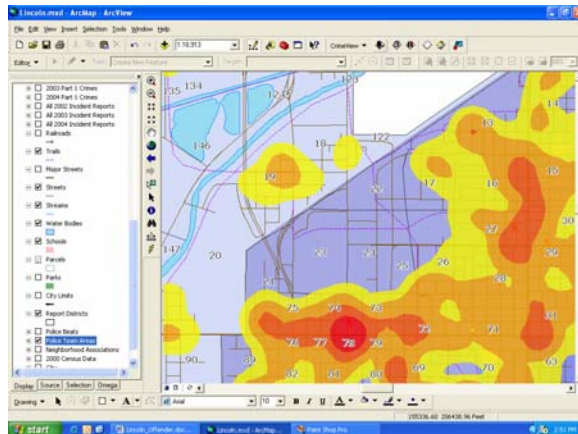
reports and .pdf maps look great. The formats are universal, and a right mouse click lets you email these to a recipient in an instant. We have taken full advantage of CrimeView Web's hyper-linking capability. With a click on a burglary icon, for example, the user links from the map to detailed case reports on our Intranet. Similarly, a click on the parcel sends the user to the county assessor's public Internet site for detailed property information and even a digital photo of the residence. Map-enabling these web resources with hyperlinks results in an especially powerful tool.

Behind these web-based applications are the powerful CrimeView extensions to ArcView and ArcGIS. Packed with features such as saved queries, cyclical reports, and tools CrimeView significantly reduces the complexity of a GIS interface. CrimeView has dramatically simplified our analysts' ability to produce timely analytical products. But even more importantly, it has made it possible for individual officers, detectives, managers, and even the chief to be analysts themselves--using the products, running the queries, discovering the connections between cases and the emerging trends. The system has repeatedly helped us solve specific crimes and devise focused prevention strategies.

The "back office" scripts developed by the Omega Group to automate our geocoding and append fresh incident data to the master shapefiles are tremendous assets. Customized saved queries and a user-friendly interface speed up work that is tedious and difficult without CrimeView, and would normally require high-level GIS skills. These tasks used to consume

most of the crime mappers' time. Now, automated scripts perform these functions behind the scenes. When the day starts, the data is already available and we can use CrimeView to focus on the crime trends, rather than spending hours preparing and processing data.

Recently, one of our uniformed street officers, Richard Lutz, made an arrest in a sex offense. A 36 year-old suspect had been cruising a neighborhood in the south part of our city during the mid-afternoon--after school dismissal, but before working parents returned home. He had approached several children in different areas at over several weeks, exposing himself to the children, or calling out to attract them to his car. We believe the arrest interrupted a pattern that may have led to a sexual assault and abduction. The pattern was uncovered with CrimeView, and this information was crucial to Officer Lutz's investigation. The events leading up to the arrest would have been submerged in the 400+ daily police dispatches were it not for our improved analytical ability. This is one of three cases I can recall in which CrimeView helped us uncover and interrupt serial sex offenders. The employees of the Omega Group provided the tools and support that resulted in a sex offender's arrest and probably prevented other future crimes by this offender.



Working with a software vendor in a specialized field can sometimes be a frustrating experience. Departments that have embarked on technology initiatives like mobile data, radio communications systems, records management systems, and digital imaging frequently have some bad experiences to relate: unplanned costs, unmet promises, unresponsive vendors, expensive or impossible customizations, service that seems to evaporate when the check clears. The Omega Group, in contrast, has provided outstanding support throughout our four year relationship. The support after installation is unprecedented. I have never worked with a company as responsive and engaged with the customer. The Omega Group is constantly working to improve their products and help their customers develop their skill and capabilities. Customers, in fact, drive many enhancements in new releases and updates. The Omega Group is more than a vendor; they are a partner. They take pride in their product and in the successes of the police departments who use CrimeView to make their communities safer places.



For more information about crime mapping, contact The Omega Group at (858) 450-2590 or visit: www.theomegagroup.com

