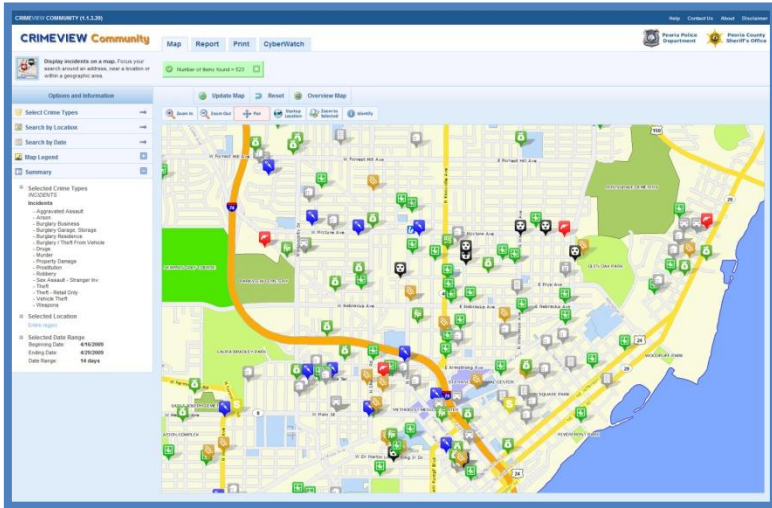


OMEGA Press Release

July 13, 2009

Peoria Police and Sheriff Launch CRIMEVIEW® Community



Peoria Police Department and Peoria County Sheriff in Illinois understand the value of a well informed public. As a result the two agencies have collaborated in launching the county's first major public crime mapping effort through CrimeView Community. The service can be accessed anywhere through a Web browser. CrimeView Community is built on ESRI's ArcGIS Server platform and enables users to map out crimes by

category, near an address or within neighborhood boundaries such as council districts.

CrimeView Community also contains a Cyberwatch tool that allows individuals to subscribe and automatically receive alerts regarding crime activity in their area. The public has a right to know what's happening in their community and this type of transparency has been proven effective in reducing crime. CrimeView Community aids in extending an agency's reach by increasing the number of eyes and ears aware of local crimes.

Community oriented policing efforts are improved as another communication channel is opened between law enforcement and the public it serves. The site can be accessed at:

<http://peoria.il.crimeviewcommunity.com/>

or visit us at booth #P-1531 in the Public Safety Showcase area

"Our new thin client approach saves significant resources in providing a central data location for end users that can be accessed using only a Web browser."

Milan Mueller, President, The Omega Group

CRIMEVIEW® Community

If you would like more information about **CrimeView Community** please contact us at:

sales@theomegagroup.com or call us toll-free **(800) 228-1059**

www.theomegagroup.com