

OMEGA Press Release

August 12, 2008

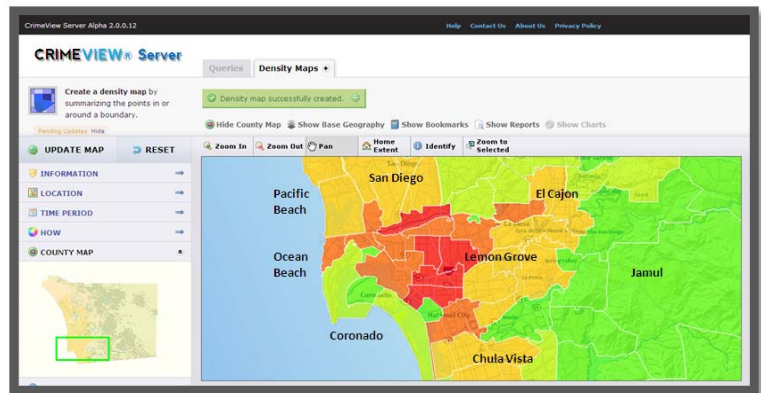
The Omega Group Introduces CrimeView Server!

The Omega Group is proud to feature CrimeView® Server which utilizes ESRI's latest ArcGIS Server technology. CrimeView® Server offers law enforcement personnel access to advanced crime mapping tools using only a Web browser.

CRIMEVIEW® Server Features:

- **Advanced Filtering** - Search by numerous available categories such as crime type, officer or case number. Results include totals by crime type as well as basic reports and animated charts. Query multiple data layers at once in order to compare reporting and calls for service data directly. Study incidents by any time period such as time of day, day of week or month.

- **Search Geographically** - Investigate incidents within any boundary or multiple boundaries at the same time. Search for activity around an address or landmark such as a school site. Switch between high resolution satellite imagery and terrain base maps with a single click.



- **Perform Detailed Analyses** - Create density maps for any boundary layer based on the count of incidents or true density. Produce repeat call layers that depict where multiple incidents occurred at the same location or address.

ESRI's ArcGIS Server technology goes hand-in-hand with efforts by The Omega Group to reduce costs for public agencies by providing easy access to mapping and analysis tools.

"Our new thin client approach saves significant resources in providing a central data location for end users that can be accessed using only a Web browser."

Milan Mueller, President, The Omega Group

CRIMEVIEW® Server

If you would like more information about **CrimeView Server** please contact us at:

sales@theomegagroup.com or call us toll-free (800) 228-1059

www.theomegagroup.com