



The Omega Group is dedicated to enriching the quality of life in communities by providing solutions for public safety and education agencies.

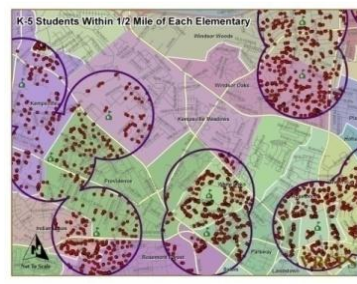
We are the industry-leading developer of innovative Geographic Information Systems software designed to assist public agencies with their daily data driven decisions. Our diverse solution offering distinguishes us in our field and includes demographic analysis, enrollment forecasting, crime analysis, investigative intelligence, COMPSTAT reporting, tactical operations, monitoring critical infrastructure as well as situational awareness. Our complete solutions are highly customized and our exclusive import process represents the very latest in data integration.

Our corporate headquarters are located in San Diego, with a regional office in Philadelphia. We have provided solutions to clients distributed throughout the United States and Canada. The Omega Group has over 500 law enforcement, public safety, and public education clients using our solutions. We are proud to have been in business since 1992.

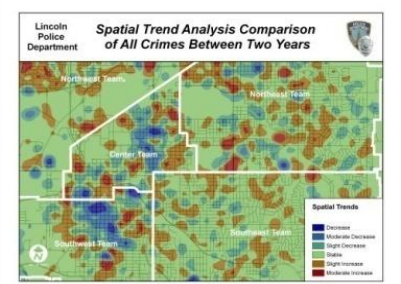
## FIRE



## SCHOOLS

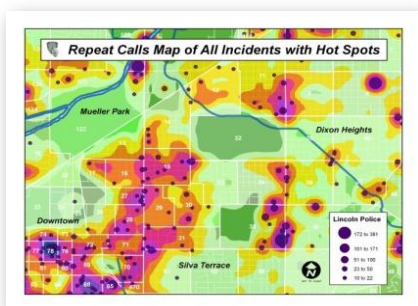


## POLICE



## CRIMEVIEW® | Desktop

**CRIMEVIEW® | Desktop** is the most widely used crime analysis and mapping tool in North America. Hundreds of agencies and crime analysts utilize CrimeView® Desktop for investigations, deployment, emergency management and COMPSTAT reporting. Computer Aided Dispatch and Records Management Systems data are automatically imported into our mapping platform. This allows end users to visualize crime activity geographically in order to put officers where they are needed most.



"CrimeView has been the foundation of our crime analysis efforts and continues to be our primary tool as we complete our second successful CrimeView Desktop upgrade. For years, CrimeView has been the primary "data driver" for field supervisors at the beginning of each shift, as well as the source of crime and call information for lieutenants."

Jim Bueerman, Chief of Police, Redlands, California

CrimeView Desktop includes a number of query, reporting, analysis, and mapping features that help expand your capabilities and simplify your current crime analysis procedures.

- **Queries** – search by any attribute, geographic boundary, or proximity to a landmark.
- **Density Maps** – create standardized density, hot spot, and repeat call maps.
- **Cyclical Reports** - combine and save queries, reports, and graphs to run anytime.
- **Exception Reporting** – produce COMPSTAT style comparison reports.
- **Threshold Alert** – alert staff by email when crime activity thresholds have been reached.
- **Analyses** – utilize our crime rate generator, spatial trending tools and census data layers.
- **Order Labels** - plot specific incidents in the order they occur with directional symbols.
- **Statistical Profiler** - project where the next event is most likely to occur.
- **Temporal Heat Index Reporting** – depict the number of crimes graphically for any time period.

To learn more about how CrimeView Desktop can help your agency improve communications and reduce crime in your community contact our sales staff toll free at (800)228-1059 or e-mail us at [sales@theomegagroup.com](mailto:sales@theomegagroup.com) for a remote demonstration.

[www.theomegagroup.com](http://www.theomegagroup.com)



## CRIMEVIEW® | Dashboard

Today's law enforcement agencies face challenges well beyond just fighting crime or responding to emergencies. Police and Sheriff's departments are overrun with data from multiple sources. Making sense of it all is a daunting task yet necessary in order to fulfill the needs of each community. Intelligence led policing that relies on data driven decisions has just become much easier with **CRIMEVIEW® | Dashboard**.



“I can recall three cases in which your solutions have helped us uncover and interrupt serial sex offenders. The employees of The Omega Group provided the tools and support that resulted in a sex offender's arrest and probably prevented other future crimes by this offender.”

Tom Casady, Chief of Police, Lincoln, Nebraska

### CrimeView Dashboard Advantages:

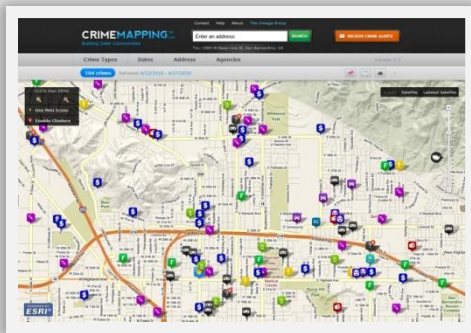
- **Establish** a common operating picture through our interactive maps, charts and reports.
- **Allocate** resources where they are needed most with our Activity Hot Sheet.
- **Analyze** crime trends through the use of our exclusive Briefing Books, Pages and widgets.
- **Search** timely information with Intelligence Filters that allow for on demand queries.
- **Customize** each Widget based on geography, crime type or policing unit.
- **Automate** the rapid dissemination of information throughout your entire agency.
- **Identify** outliers with intuitive Benchmark and Drill Down Charts.
- **Provide** your command staff with the tools they need to make data driven decisions

To learn more about how CrimeView Dashboard can help your agency improve communications and reduce crime in your community contact our sales staff toll free at (800)228-1059 or e-mail us at [sales@theomegagroup.com](mailto:sales@theomegagroup.com) for a remote demonstration.

## CRIMEMAPPING.com™

**CRIMEMAPPING.com™** helps law enforcement agencies throughout North America provide the public with valuable information about recent crime activity within their neighborhood. A well informed citizenry has been proven effective in reducing crime.

CrimeMapping.com strengthens community oriented policing efforts and increases an agency's transparency by promoting trust. The Omega Group has been assisting law enforcement since 1992 and our goal is to improve safety through the use of technology.



*“Crimestmapping.com has proven itself as a valuable tool to our new Neighborhood Watch program. Your "Crime Alerts" e-mails have allowed me to get detailed, timely crime data information out to all of our members. Our efforts are now focused and far more effective than they would have been without your program. Thanks!”*

*Resident, Lincoln, Nebraska*

### CrimeMapping.com™ Benefits:

- **Analyze** crime activity within a radius of any location such as place of residence, business address or child's school of attendance.
- **Display** the distance from any crime to any address of interest.
- **Generate** simple interactive reports that allow for instant sorting as well as hyperlinks back to our intuitive mapping area.
- **View** current records as our automated import process ensures that the crime data being shown is always up to date.
- **Jump** quickly to any other agency listed through our Agencies tab.
- **Filter** by crime type as well as date reported in order to focus on specific patterns.
- **Connect** to other local public safety resources through the use of our **Agency Links**.
- **Plot** only incidents for the agency you want to view using our **Agency Filters**.
- **Receive** free **Crime Alerts** via e-mail.
- **Pan** between areas and compare crime activity by community.
- **Bookmark** any query or e-mail a map to a friend.
- **Reach** out to your community and share valuable information!



## CRIMEMAPPING.com™

### What separates us from the competition?

#### Integrity

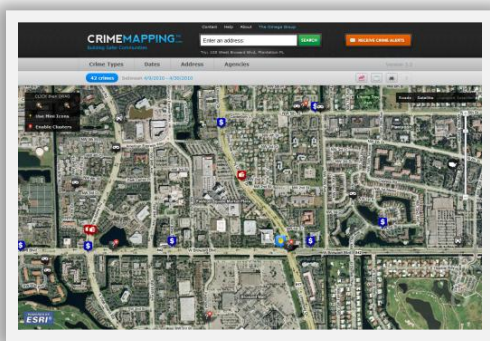
We never scrape data from other sites and call it our own. The Omega Group respects the sensitivity of law enforcement records and only posts data with the fully expressed permission of each agency we work with. CrimeMapping.com allows agencies to filter out victim sensitive crimes and also provides the means to thoroughly test your data in our staging area.

#### Accuracy

Our use of the ESRI mapping engine enables us to more accurately geocode, and then generalize each crime location according to your required level of security. Some crimes may be eliminated as needed because of their sensitivity. Our advanced processes give you the capability to ensure the public receives the best information possible while still protecting security.

#### Service

The Omega Group has been supporting law enforcement for since 1992. Some of our competitors have been in business for a few months and are more concerned with market share than data integrity. The Omega Group is not backed by venture capital and we will continue to provide a high level of support and service to all of our clients for years to come.



**“This is a great service! I am on the board of directors for a local community group and I am also a local school teacher. This information helps me keep abreast of what is going on in our city so I can keep my eyes and ears open at work. I truly believe that all cities should get on board!”**

**Resident, Plantation, Florida**

To learn more about how CrimeMapping.com can help your agency improve communications and reduce crime in your community contact our sales staff toll free at (800)228-1059 or e-mail us at [sales@theomegagroup.com](mailto:sales@theomegagroup.com) for a remote demonstration.



The Omega Group is dedicated to enriching the quality of life in communities by providing solutions for public safety and education agencies.

## San Diego Corporate Headquarters:

The Omega Group  
5160 Carroll Canyon Road  
San Diego, California 92121

Toll Free: (800) 228-1059

Fax: (858) 450-0239

Sales Staff: [sales@theomegagroup.com](mailto:sales@theomegagroup.com)

Philadelphia Office Direct: (610) 975-9405

Web Site: [www.theomegagroup.com](http://www.theomegagroup.com)

## FIRE



## SCHOOLS



## POLICE

