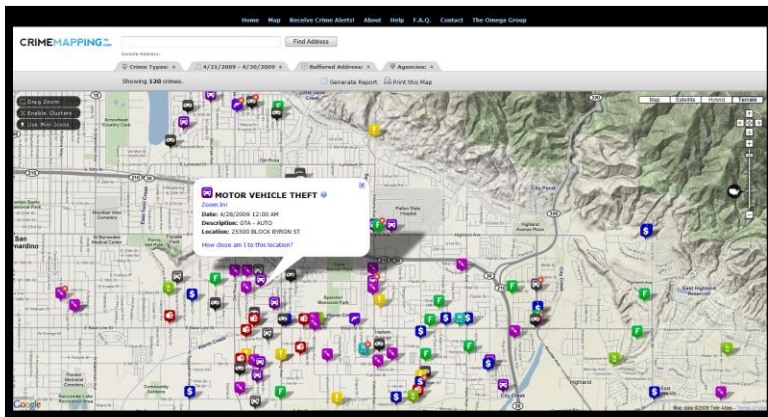


OMEGA Press Release

May 1, 2009

San Bernardino County Sheriff Keeps the Public Informed

San Bernardino County Sheriff understands the value of a well informed public and recently became the first law enforcement agency in Southern California to go live with CrimeMapping.com. The interactive Web site enables citizens to map out and view reports on crime activity by neighborhood or near an address. CrimeMapping.com also



includes a Crime Alerts service that allows users to subscribe via e-mail and receive reports regarding incidents of crime near their home or business.

San Bernardino County Sheriff can now provide a new level of transparency for the two million residents it serves. People can

view exactly what types of crime are occurring as well as where and when they are being committed. CrimeMapping.com has been proven effective in reducing crime by increasing the number of eyes and ears out there aware of local activity.

The Omega Group is using both ESRI and Google technology in providing the service. The fourteen cities and 20,000 square miles covered by San Bernardino County Sheriff can now access accurate and timely information about crime in their area.

“This tool represents the core of what community oriented policing is all about.” - Milan Mueller, President, The Omega Group

CRIMEMAPPING™

If you would like more information about **CrimeMapping.com** please contact us at:

crimemapping@theomegagroup.com or call us toll-free **(800) 228-1059**

www.crimemapping.com