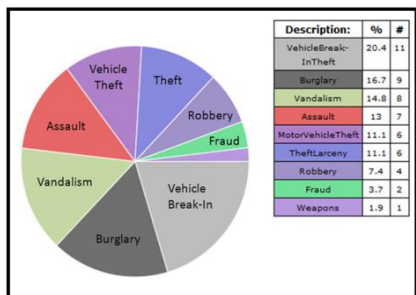


OMEGA Press Release

April 15, 2010

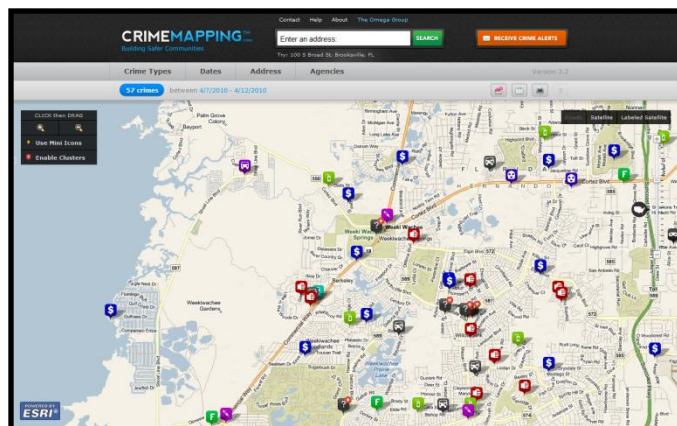
Florida Agencies Reach Out to Local Communities



Keeping the public well informed has been proven effective in reducing crime. Many Florida law enforcement agencies are accomplishing this through the use of CrimeMapping.com provided by The Omega Group. Citrus County Sheriff, Hernando County Sheriff, Plantation, Sarasota, Sanford and Winter Garden Police Departments are just a few of the agencies choosing to provide their communities with easy access to crime

records through a Web browser. Users can instantly study crime activity near any location as well as create simple reports and charts. The Crime Alerts feature allows users to subscribe via e-mail and automatically receive updates when new crimes occur in their area.

The crime information provided comes directly from each agency's records management system. ESRI's powerful mapping engine is then used to process every record by location. This way the data being provided is both accurate and timely. "We never scrape data from other Web sites as it would not only reduce our accuracy levels but also damage many of the long-term relationships we've formed with law enforcement staff during our eighteen-years in business" says Milan Mueller, President of The Omega Group.



Florida policing agencies understand the value data transparency as well as community oriented policing. CrimeMapping.com helps them achieve both of these goals. The service is also extremely affordable as there are no software or server costs associated with the Web based mapping system.

CRIMEMAPPING.com™ POWERED BY **ESRI**

RECENTLY FEATURED IN THE WALL STREET JOURNAL AND USA TODAY

If you would like more information about **CrimeMapping.com** please contact us at:

crimemapping@theomegagroup.com or call us toll-free **(800) 228-1059**

www.crimemapping.com