

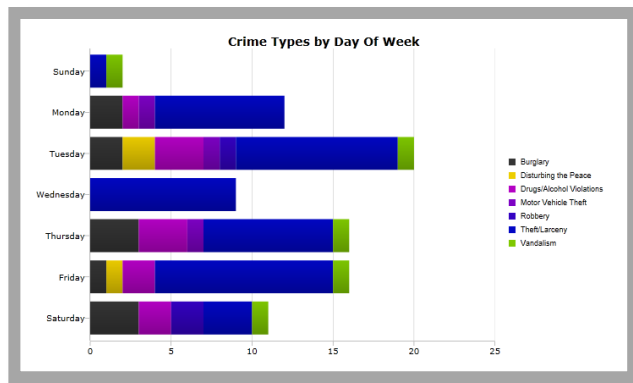
# OMEGA Case Study

September 8, 2011

## Colleges and Universities Comply with Clery Act Using CrimeMapping.com

By Eugene Mueller

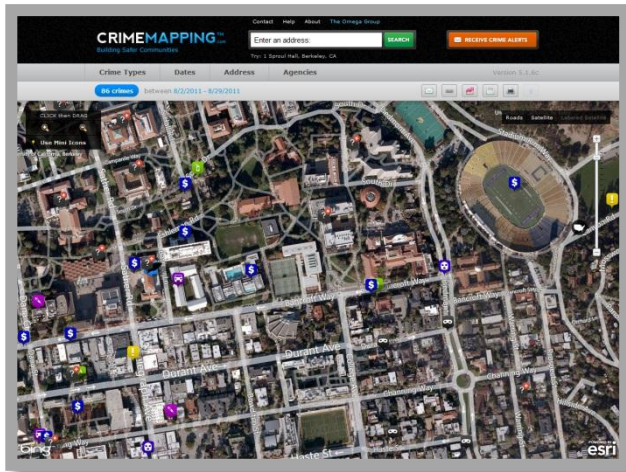
A critical consideration for most parents preparing to send their children to college is the degree of public safety on and around campus. Parents are scrutinizing the crime and disorder statistics of prospective schools as part of their selection criteria. Federal law requiring this information to be made readily available and accessible backs up the concerns of parents regarding public safety records of colleges and universities.



The Clery Act is a federal law that is enforced by the U.S. Department of Education that mandates that colleges or universities that participate in federal student financial aid programs disclose detailed information and statistics regarding campus public safety. It is named to honor the memory of Jeanne

Clery who was murdered in her university dormitory in 1986. Among the numerous requirements of the Clery Act is that the campus police or security department provide a public crime log of all crime incidents occurring on campus property or areas under the control of the college or university even if not located on the central campus.

CrimeMapping.com by The Omega Group provides the features that allow for compliance with the required elements for the public crime log under the Clery Act. The critical elements include: (1) the date and time the crime incident was reported;(2) the date and time the crime occurred;(3) the nature and description of the crime incident;(4) the approximate location of the crime or alleged crime;(5) the disposition of the complaint, if known;(6) maintenance of records for all incidents for a minimum of past 60 days. CrimeMapping.com goes well beyond these minimum requirements by using technology that verifies the accuracy of the data and allows for retrieval of the previous six months.



Campus public safety or police departments can immediately implement the public crime log utilizing Crimemapping.com through its Web based service. Crimemapping.com automatically extracts crime incident data from department information systems and displays the data with simple graphics in the form of interactive maps, charts and reports. Furthermore, by registering their

email address online, students, parents, faculty and support staff can receive timely alerts from Crimemapping.com about campus crime activity with all the appending critical elements. They can also download a free IPHONE application that provides the same data on a mobile platform.

Colleges and universities use the Crimemapping.com Agency Links feature to provide a connection or linkage to their Clery Act status page of crime incidents so that campus stakeholders can monitor the law enforcement outcomes of these incidents whether these are field interviews, arrests or prosecutions. Consequently, campus community members are well informed about the resolution of incidents.

Choosing where to attend college or university is an arduous process for most students and their parents these days. Trying to find the balance of academics and extracurricular activities that will be the right fit involves a close examination of many factors. The high cost of higher education makes this choice all the more important. CrimeMapping.com is an integral part of the commitment of institutions of higher learning to protect this invaluable investment in our future.

**CRIMEMAPPING.COM™**

*FEATURED IN THE WALL STREET JOURNAL AND USA TODAY*



If you would like more information about **CrimeMapping.com** please contact us at:

[sales@theomegagroup.com](mailto:sales@theomegagroup.com) or call us toll-free **(800) 228-1059**

[www.theomegagroup.com](http://www.theomegagroup.com)

